

STATE OF MINNESOTA, }
COUNTY OF MURRAY, } SS.

I hereby certify that the within Instrument
was filed in this office for record on the
30TH day of AUGUST A.D. 20 19
at 9:00 o'clock A. M. and was duly
recorded as Document No.

Guelyn C. Larson
County Recorder

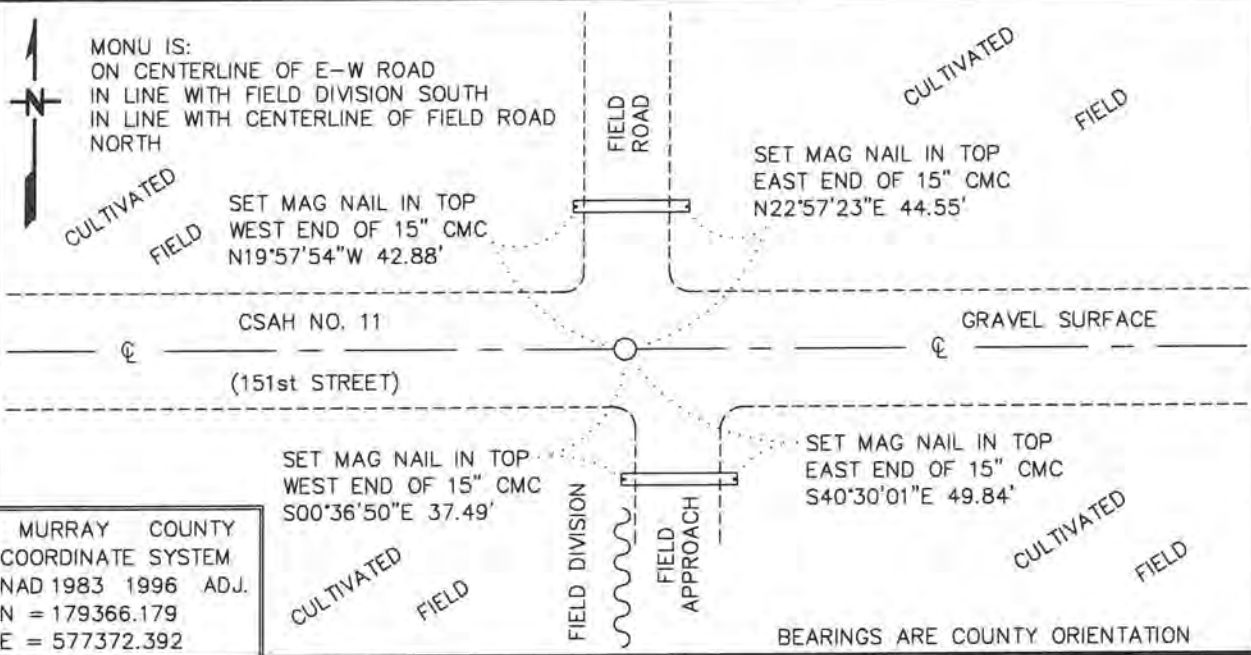
Index No. N-23

CERTIFICATE OF LOCATION OF GOVERNMENT CORNER

 NORTH QUARTER Corner of Section 24 , Township 107 N , Range 39 W
5TH Principal Meridian, State of Minnesota, County of MURRAY

At the corner location shown on the sketch:

- On 9/13/2017 found a 60d SPIKE, DOWN 0.2'
DATE
- left monument as found, lowered monument, removed monument (explain)
- On 9/13/2017 Placed a 3/4" X 24" REBAR WITH PLASTIC CAP STAMPED
DATE
"MN DNR LS 17003", DOWN 0.5', IN PLACE OF FOUND SPIKE



Statement of evidence for this corner location is on back of this page.

APRIL 2018
WMA00745

I hereby certify that this plan, specification, or report was prepared by me or under my direct supervision and that I am a duly Licensed Land Surveyor under the laws of the State of Minnesota.

SIGNATURE Bruce W. Shepperd DATE 8/15/19 License Number 17003
BRUCE W. SHEPPERD

- 1985 March, the DNR Bureau of Engineering and now the Division of Lands and Minerals contacted the following for survey information:
Minnesota Secretary of State's Office
Minnesota Department of Transportation in St. Paul
Murray County Recorder's Office
Murray County Engineer's Office
United States Department of the Interior, Fish and Wildlife Office in St. Paul
Martin Land Surveying of Worthington
Madsen Land Surveyors of Fairmont
Sioux Engineering of Windom
- 2017 July, the DNR Division of Lands and Minerals contacted the following for survey information:
Website - mngeo.state.mn.us for GLO plat and field notes
Website - murray-countymn.com for section and quarter section corner information
Murray County Recorder's Office
Zieske Land Surveying, Inc. of Windom
- 1861 U.S. General Land Office notes, obtained from mngeo.state.mn.us, show the corner marked with a wood post set in mound of earth with pits and trench dug around the mound. Also, planted Alder seed between the four pits and trenches.
- 1954 A Surveyor's Record Book page for Section 13, T107N, R39W, obtained from murray-countymn.com, shows an iron stake in center of grade at the corner but does not indicate if it was found or set. The corner is shown:
2653.2 feet from the southeast corner of Section 13
2653.2 feet from the southwest corner of Section 13
- 1954 A page from an old tie book, obtained from the County Engineer's Office, states that the corner is a $\frac{3}{4}$ inch iron stake.
- 1963 A page from an old tie book, obtained from the County Engineer's Office, states that an iron stake was found at the corner and a steel pin was set 1 inch below grade with the following ties:
center CMP west end, south side, 37.36 feet
top center CMP east end, south side, 50.28 feet
- 1985 July 15, the DNR Bureau of Engineering traversed to the area of the corner and found a $\frac{3}{4}$ inch by 7 inch rebar, down 0.2 of a foot. The rebar was found to be:
2670.10 feet from the northeast corner of Section 24
one foot south of the center line of an east-west road
one foot east of a filed division south
one foot east of the west edge of a field road north
- 2012 June 12, ties to Government Corners, obtained from murray-countymn.com, show that a bent over barn spike was found, down 4 inches, at the corner. The following is noted about the corner:
on center line of road
ties are good
believe this is an assumed corner

The barn spike is shown to have the following coordinates:

N = 179366.249

E = 577373.136

Elev = 1449.072

2017 September 13, the DNR Division of Lands and Minerals dug with a backhoe in the area of the corner and found a 60d spike, continued digging, and found the 1985 rebar in the spoil pile made by the backhoe. Excavated to a depth of two feet by 8 feet north-south by 10 feet east-west, centered on the found spike. No other evidence of a monument was found in the excavation. Searched for and found the CMP used in 1963 for ties but were unable to find markings on it that would have been made to measure to. Accept the spike as the location of the corner so a $\frac{3}{4}$ inch by 24 inch rebar with a plastic cap stamped "MN DNR LS 17003" was set in its place and was found to be:

2669.79 feet from the northeast corner of Section 24
on the center line of east-west 151st Street (gravel surface)
in line with the center line of a field road north
in line with a field division south

Analysis of the above information led the DNR Division of Lands and Minerals to conclude that the $\frac{3}{4}$ inch by 24 inch rebar with a plastic cap stamped "MN DNR LS 17003" set in place of a found spike marks the location of the corner.